



FNOMCeO

PROGETTO SALA COMITATO - RIUNIONI VIA FERDINANDO DI SAVOIA N°1 ROMA

architetto fiorenzo scaburri

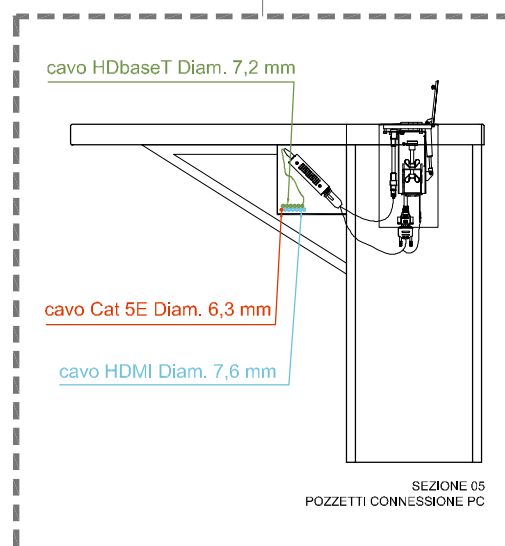
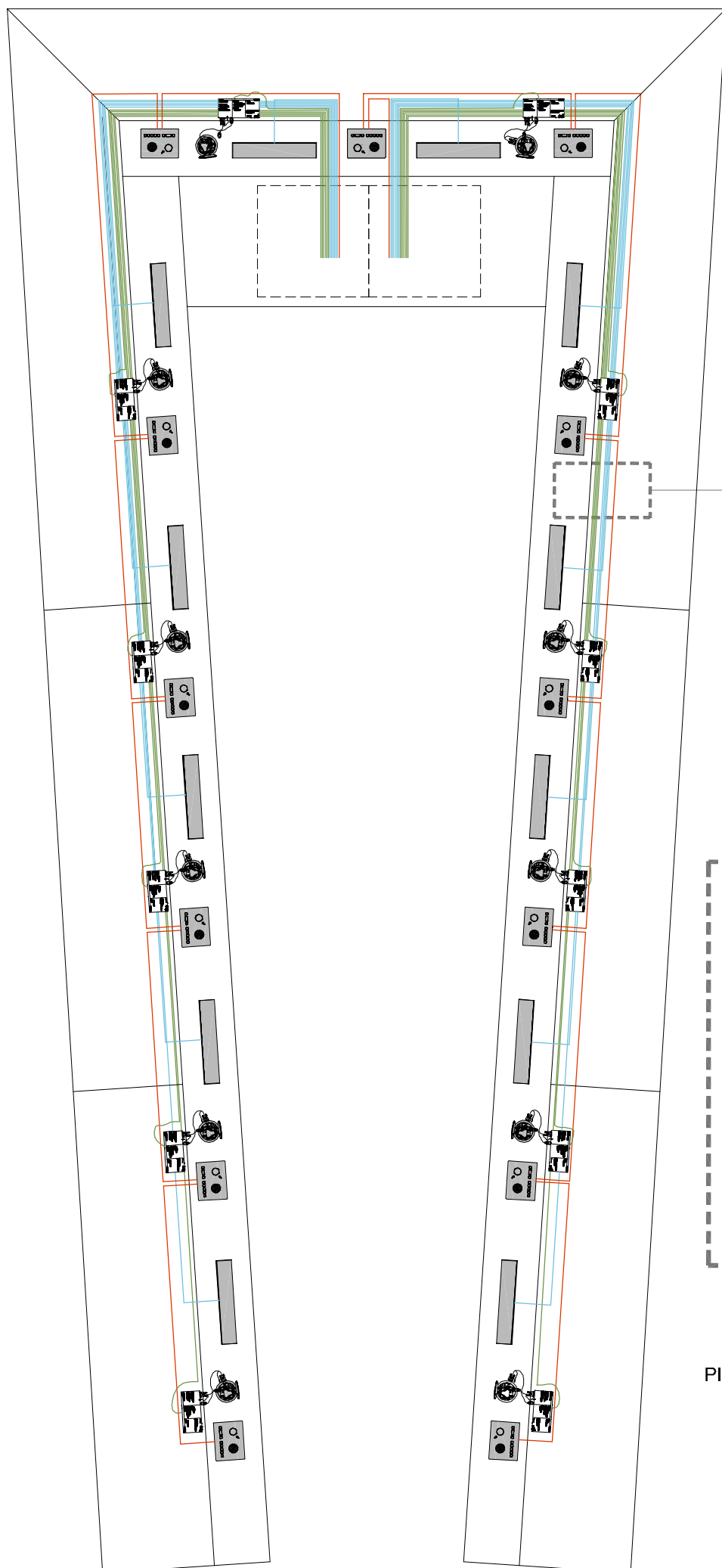
PROGETTO SALA COMITATO – RIUNIONI

Il progetto prevede la realizzazione con la relativa stima dei costi per i seguenti elementi di arredo:

- Tavolo comitato articolato con elementi componibili contenenti apparecchiature audio-visive, finiture e materiali simili all'arredamento esistente in sede;
 - o Descrizione tecnica nelle tavole grafiche da 01 a 07 e nelle schede tecniche allegate.
- Tavolo riunioni finiture e materiali simili all'arredamento esistente in sede;
 - o Descrizione tecnica nelle tavole grafiche 07 e 08.
- Sedute per tavolo comitato e riunioni tipologia A o B da proporre n° 45;
 - o Descrizione tecnica nelle tavole grafiche 09 e 10.
- Sedute aggiuntive sala comitato tipologia C n° 15;
 - o Descrizione tecnica nella tavola grafica 11.

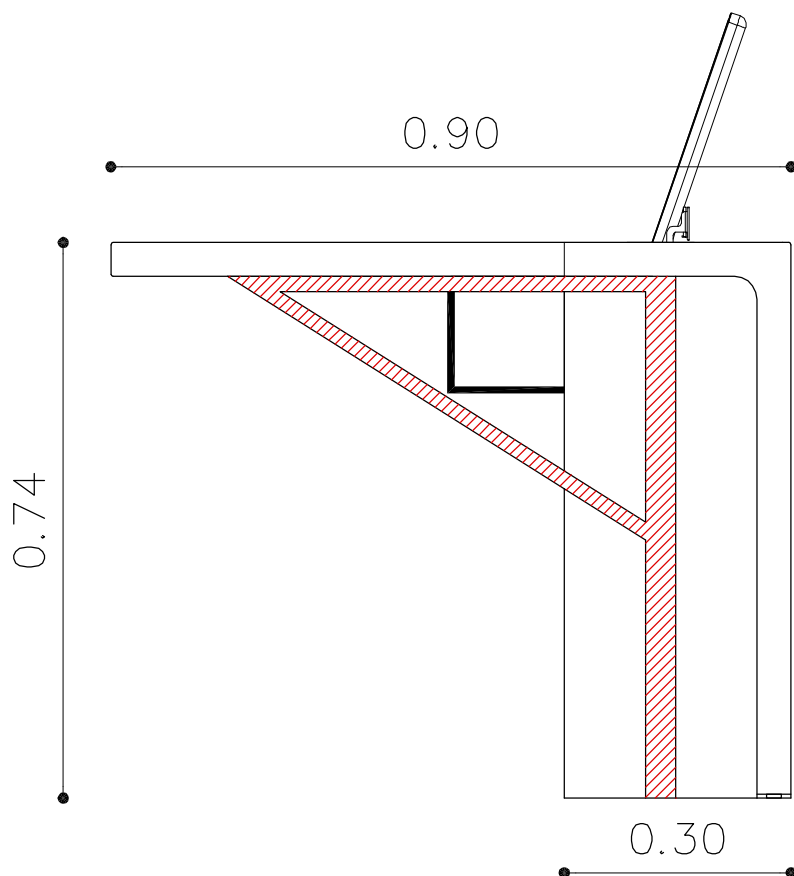
Allegati:

- Tavole grafiche da 01 a 11;
- Immagini illustrative;
- Schede tecniche delle tecnologie da inserire.

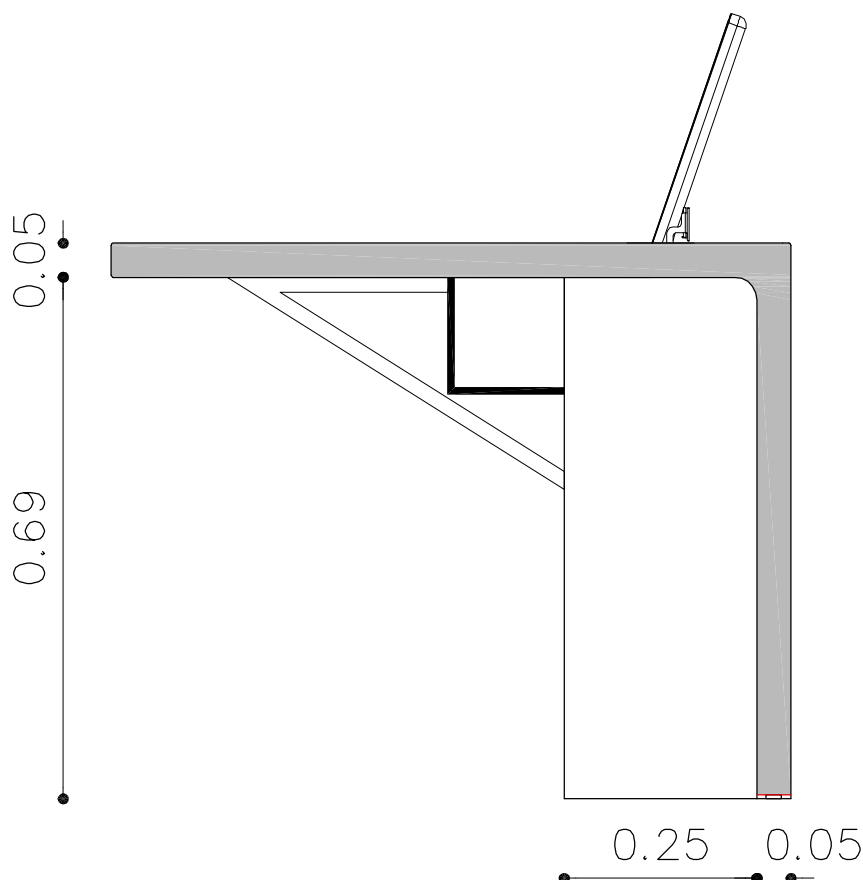


PIANTA TAVOLO COMITATO- SCHEMA CAVI

data:	scala:	tavola:
luglio '16	---	02
fiorenzo scaburri architetto via rosmi, n.1 - 21013 gallarate (VA) - tel/fax 0331 773912 studioscaburriarchitetto@gmail.com		



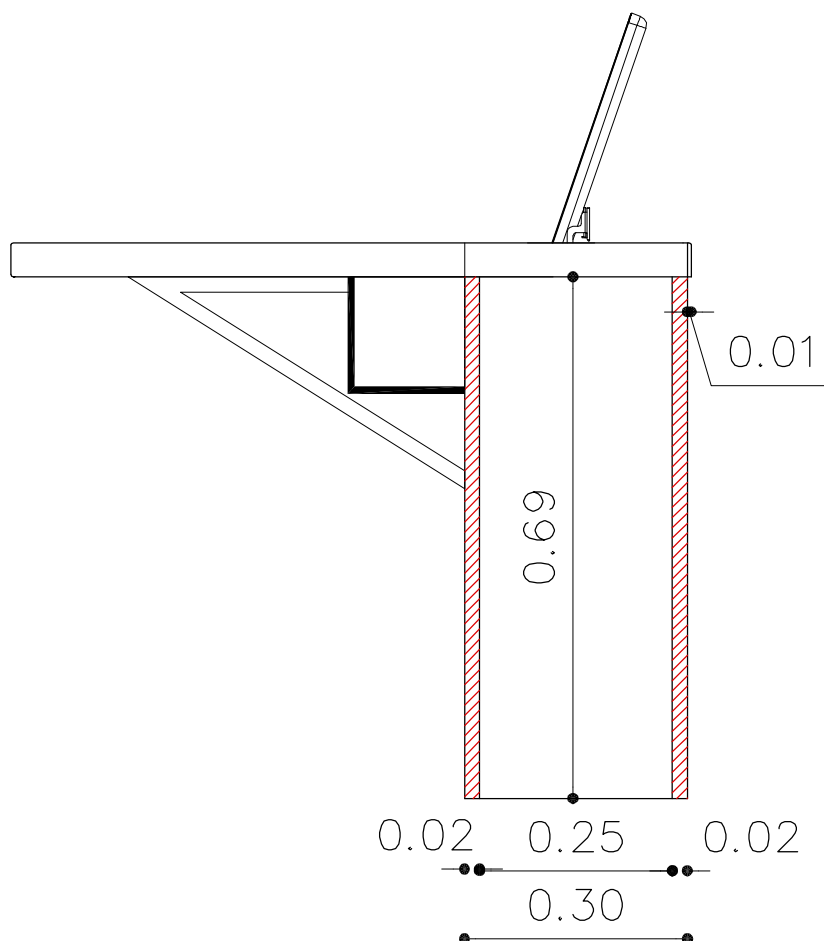
SEZIONE 01
STRUTTURA PORTANTE INTERNA



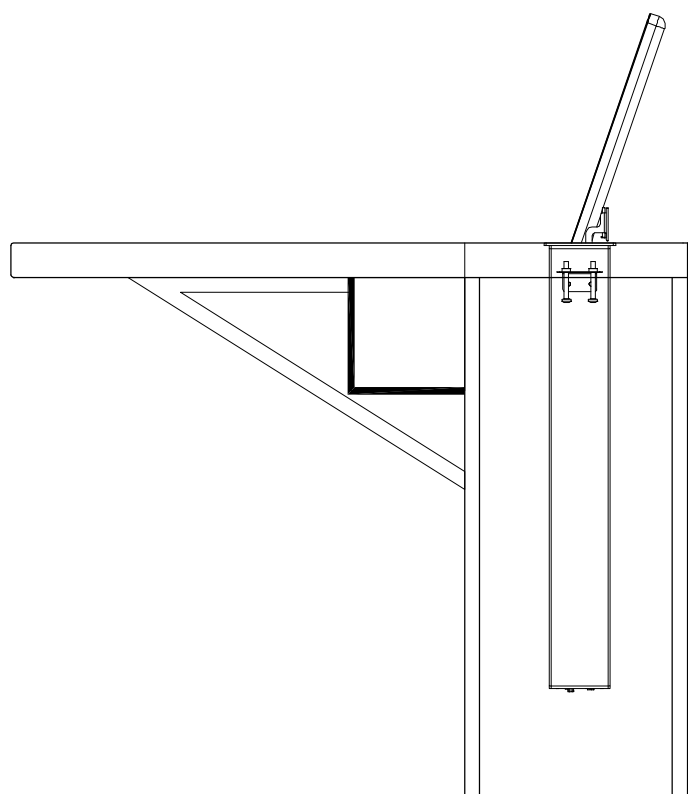
SEZIONE 02
STRUTTURA FRONTALE CROMATA

SEZIONI / PROSPETTI

data:	scala:	tavola:
luglio '16	1:10	03
fiorenzo scaburri architetto via rosmini, n.1 - 21013 gallarate (VA) - tel/fax 0331 773912 studioscaburriarchitetto@gmail.com		



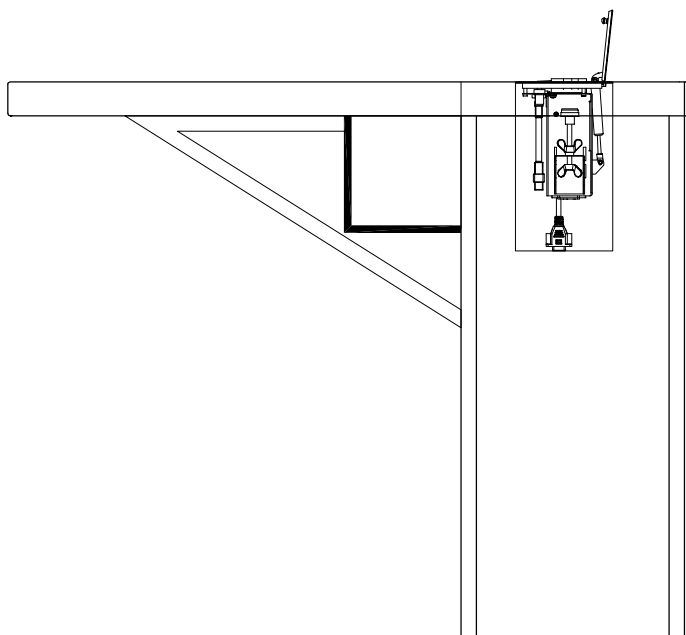
SEZIONE 03
TAMPONATURA VERTICALE
VANO TECNICO



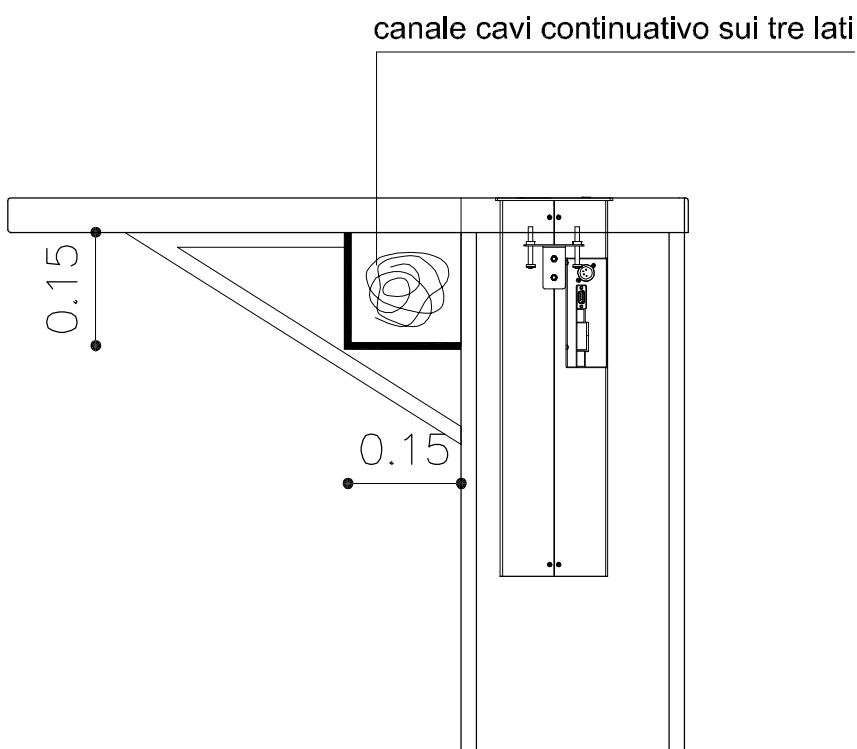
SEZIONE 04
MONITOR A SCOMPARSA
(vedi scheda tecnica allegata)

SEZIONI / PROSPETTI

data:	scala:	tavola:
luglio '16	1:10	04
fiorenzo scaburri architetto via rosmi, n.1 - 21013 gallarate (VA) - tel/fax 0331 773912 studioscaburriarchitetto@gmail.com		



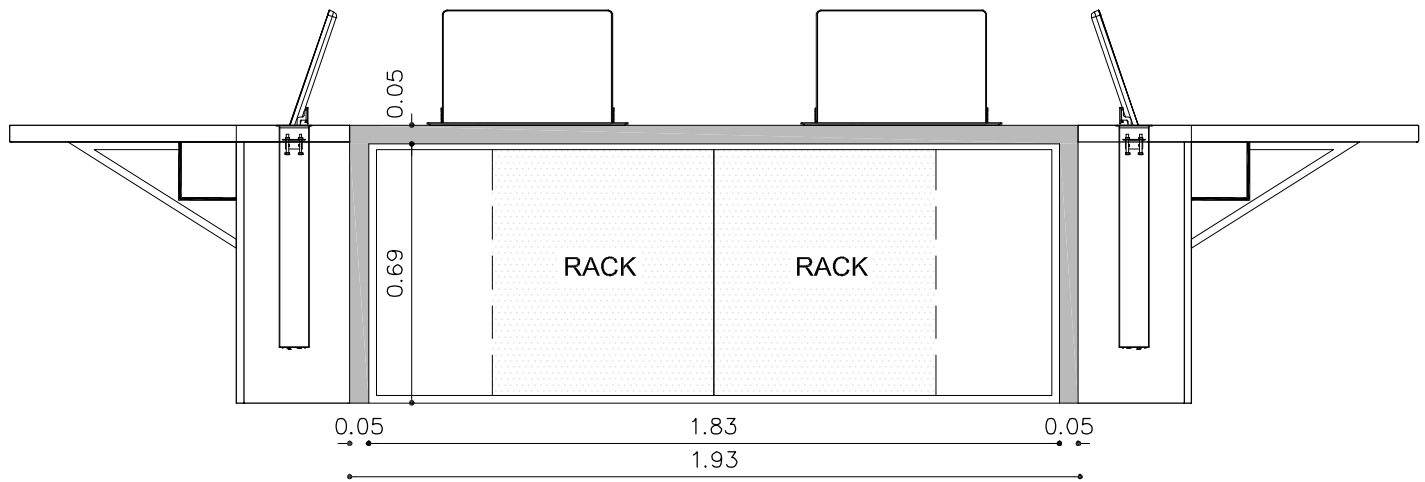
SEZIONE 05
POZZETTI CONNESSIONE PC
(vedi scheda tecnica allegata)



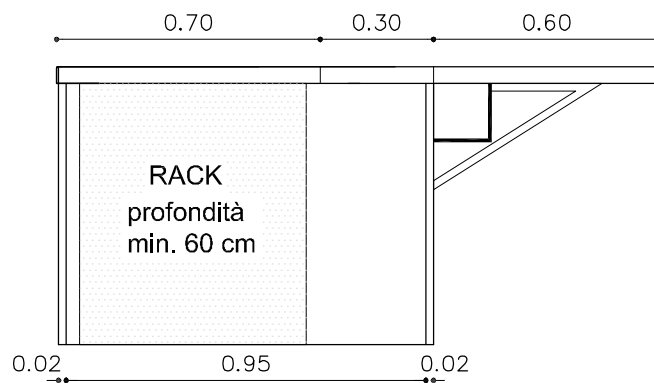
SEZIONE 06
CONFERENCE SYSTEM /
CANALE CAVI
(vedi scheda tecnica allegata)

SEZIONI / PROSPETTI

data:	scala:	tavola:
luglio '16	1:10	05
fiorenzo scaburri architetto via rosmini, n.1 - 21013 gallarate (VA) - tel/fax 0331 773912 studioscaburriarchitetto@gmail.com		



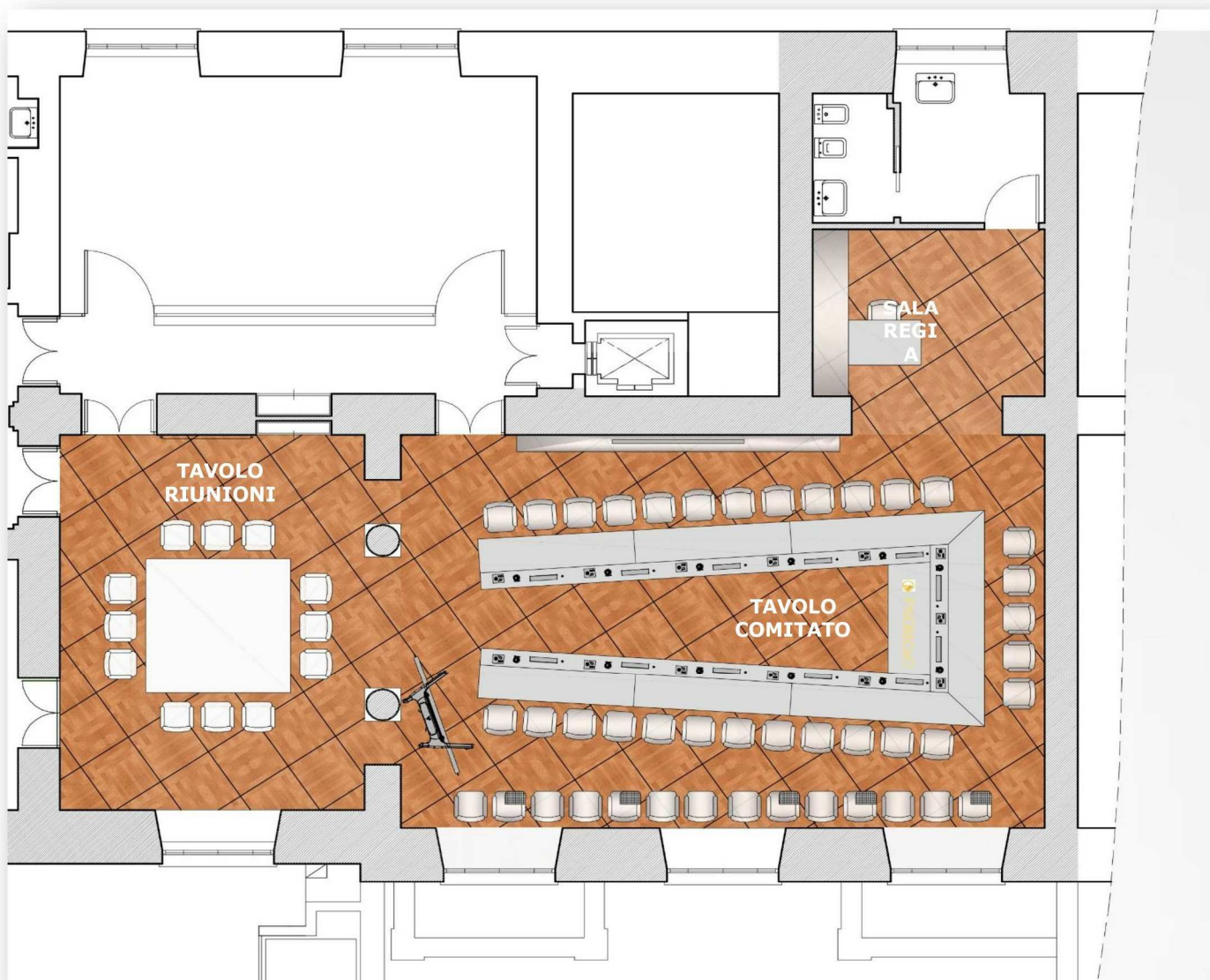
PROSPETTO - VISTA FRONTALE
VANO TECNICO



SEZIONE 07
STRUTTURA RACK SUPPORTO APPARATI
VANO TECNICO

SEZIONI / PROSPETTI

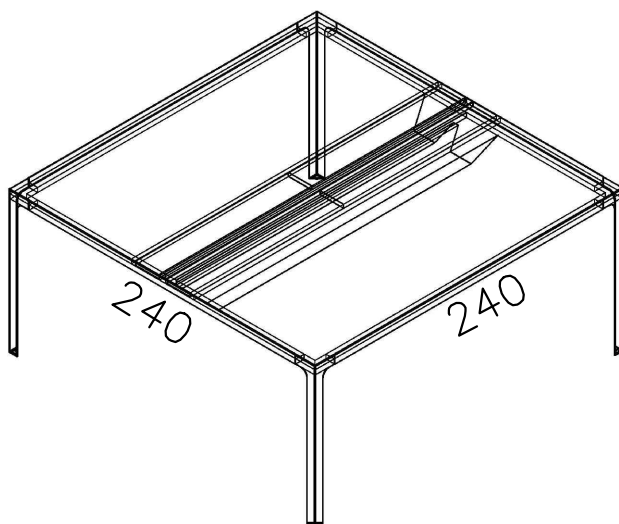
data:	scala:	tavola:
luglio '16	1:10	06
fiorenzo scaburri architetto via rosmi, n.1 - 21013 gallarate (VA) - tel/fax 0331 773912 studioscaburriarchitetto@gmail.com		



PIANTA TAVOLO COMITATO - RIUNIONI

data:	scala:	tavola:
luglio '16	---	07

fiorenzo scaburri architetto
 via rosmini, n.1 - 21013 gallarate (VA) - tel/fax 0331 773912
 studioscaburriarchitetto@gmail.com



CARATTERISTICHE TECNICHE

PIANO:

Piano realizzato in pannelli di particelle di legno spessore 22 mm, rivestiti in laccato o essenza incassato all'interno della struttura della base, quest'ultima in metallo verniciato.

I piani in nobilitato melaminico sono bordati in PVC spessore 2,5 mm e stondati sui quattro lati.

STRUTTURA:

Le gambe e i traversi perimetrali sono di dimensioni di 60 mm, in metallo cromato, con piedino di regolazione.

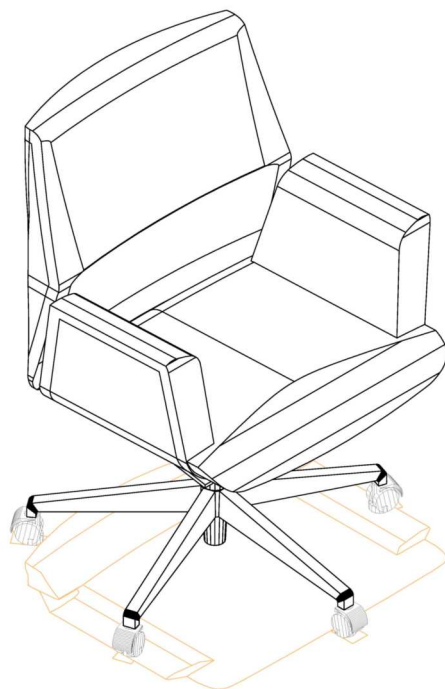
La sagoma della gamba si innesta nei profili orizzontali raccordando le linee in maniera architettonica e strutturale.

I profili del piano sono in alluminio cromati, e si collegano solidamente alle gambe creando una struttura portante indipendente dal piano.

NOTA: La tipologia e le finiture simili ai tavoli riunioni esistenti.

TAVOLO RIUNIONI

data:	scala:	tavola:
luglio '16	---	08
fiorenzo scaburri architetto via rosmini, n.1 - 21013 gallarate (VA) - tel/fax 0331 773912 studioscaburriarchitetto@gmail.com		



CARATTERISTICHE TECNICHE

SCocca:

La scocca del sedile, schienale e braccioli in legno multistrato di pioppo di spessore 10 mm.

IMBOTTITURA:

L'imbottitura è in schiumato a freddo con inserti in polipropilene.

BASAMENTO:

Base a 5 razze, in alluminio lucidato montato su ruote piroettanti auto-frenanti in gomma morbida per pavimentazioni in legno.

FINITURE:

Scocca esterna ed interna in pelle soft, colore da definire con la committenza.



SEDUTA TIPO A (n° 45)

data:	scala:	tavola:
luglio '16	---	09
fiorenzo scaburri architetto via rosmi, n.1 - 21013 gallarate (VA) - tel/fax 0331 773912 studioscaburriarchitetto@gmail.com		



CARATTERISTICHE TECNICHE

SCocca:

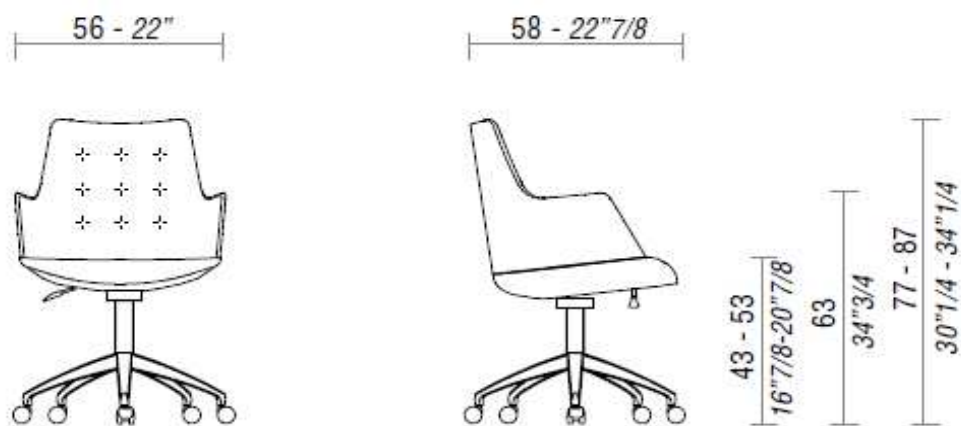
Monoscocca in schiumato a freddo.

BASAMENTO:

Base a 5 razze con pistone a gas, razze in alluminio lucido, ruote piroettanti autofrenanti in gomma morbida per pavimentazioni in legno.

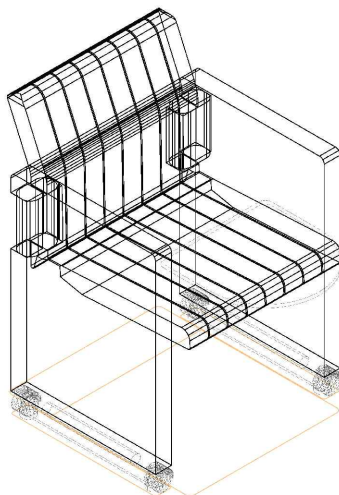
FINITURE:

Scocca esterna ed interna in tessuto, pelle, pelle soft, colore e materiali da definire con la committenza.



SEDUTA TIPO B (n° 45)

data:	scala:	tavola:
luglio '16	---	10
fiorenzo scaburri architetto via rosmi, n.1 - 21013 gallarate (VA) - tel/fax 0331 773912 studioscaburriarchitetto@gmail.com		



CARATTERISTICHE TECNICHE

SEDILE E SCHIENALE:

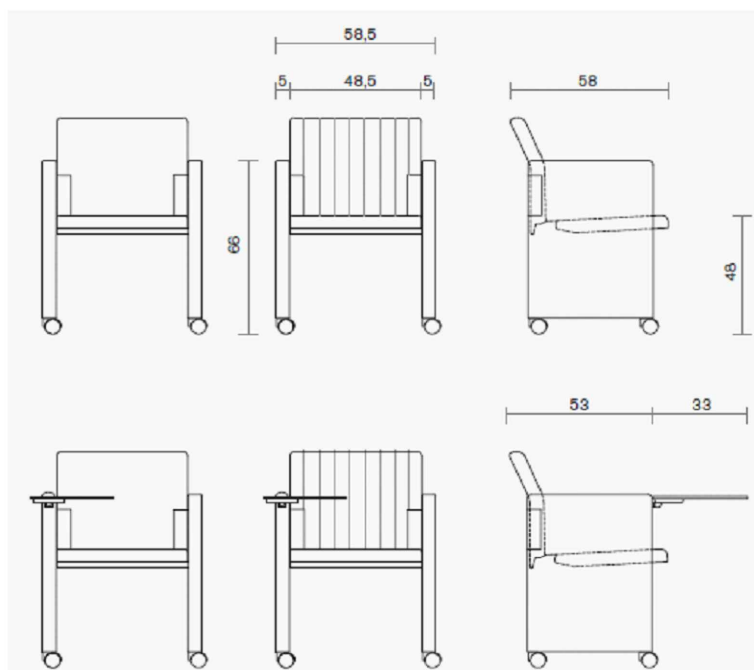
In tubolare di acciaio a sezione tonda Ø15mm e rettangolare 50x15mm e cinghie elastiche di sostegno e molleggio, il tutto annegato nel poliuretano autoestinguente schiumato a freddo, densità di 65Kg/mc, con rivestimento impreziosito da una modanatura cannettata nella versione cannettata. Cerniere per il ripiegamento della poltrona in poliammide colore grigio.

STRUTTURA:

Fiancata con struttura in tubolare di acciaio a sezione tonda Ø 15 mm e rettangolare 50x15 mm, spessore mm 2 entrambi, annegata nel poliuretano autoestinguente schiumato a freddo, densità di 65 Kg/mc.

ACCESSORI:

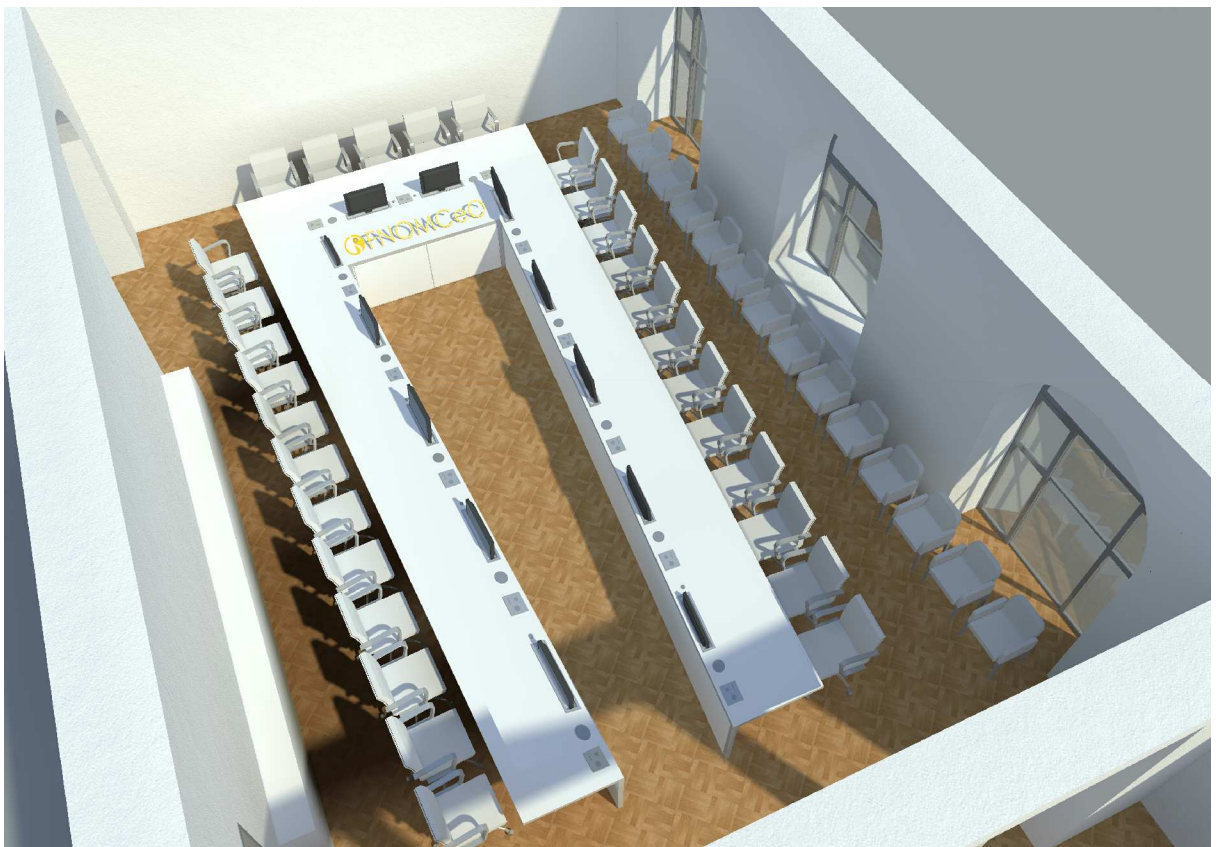
Tavoletta scrittoio destra con meccanismo antipanico.

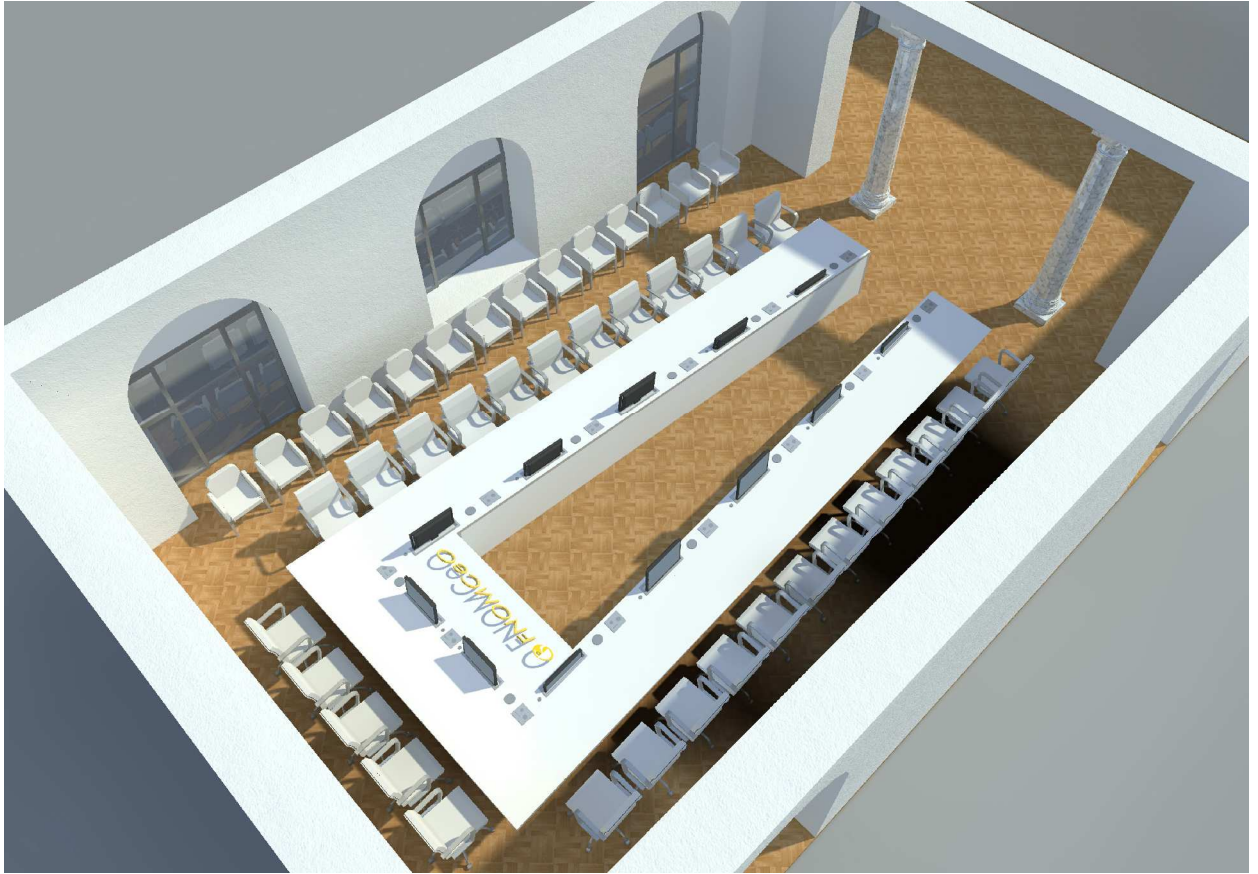


SEDUTA TIPO C (n° 15)

data:	scala:	tavola:
luglio '16	---	11
fiorenzo scaburri architetto via rosmini, n.1 - 21013 gallarate (VA) - tel/fax 0331 773912 studioscaburriarchitetto@gmail.com		







FULL HD Professional 21.5", wide screen format, retractable data monitor Ref. AH22DX216GA
with 20 degrees of inclination, to be integrated into meeting and conference room tables

GENERAL SPECIFICATIONS

LCD type	FULL HD 21.5" TFT Active Matrix, widescreen format. LED Backlight
Cabinet & cover plate	Solid mechanized aluminium housing in anodised finishing. Upper cover plate in brushed stainless steel. Electrical powered lift system with variable speed, 20 degrees of inclination. Front black serigraphy glass
Controls	Digital

DISPLAY

Brightness	250cd/m ²
Contrast ratio	1000:1
Resolution (dots)	1920 (h) x 1080 (v)
Pixel	0.2475 (h) x 0.2475 (v) mm
Viewing angle	178° (v) / 178° (h)
Viewing area	475.2 (h) x 267.3 (v) mm
LED life time	30,000 hrs

ENGINE

Control UP/DOWN	Buttons on upper cover plate, GPI, RS422
Electronic control	PWM

OTHER

Response time	Tg-g 8 ms
Temperature	Operating +0°C ~ +40°C, Storage -20°C ~ +60°C
Monitor control	RS422 (RJ45 CAT5)

CONNECTIONS

Input signal	RGB SubD 15 (1 input) DVI-D (1 input)
RJ45 CAT5 (with loop)	Addressable RS422 monitor control by AH NET protocol
GPI (SubD9)	Up/down control

ELECTRICAL

External power supply	100-240 Vac, 47/63Hz, 12Vdc - 12.5A
Power consumption	80W

MECHANICAL

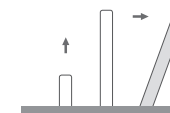
Screen	542 x 320.3 x 30 mm [21.34" x 12.2" x 1.18"]
Upper cover plate	650 x 104 x 3 mm [25.59" x 4.1" x 0.12"]
Housing below the table	631.4 x 591.25 x 83.4 mm [24.9"x23.3"x3.3"]
Weight	TBA

OPTIONS

TS2216G	Projected capacitive multi-touch screen
KB0062C	Keyboard storage box for table integration
UC	Built in FULL HD camera with USB connector
EMM	Electrically retractable microphone
CC	Customised cover plate with speaker, voting system, USB connector
UI	Prepared for underneath installation
CL	Customized laser engraved logotype
CA	Housing can be anodized in different colours
HDCP	HDCP Compliance

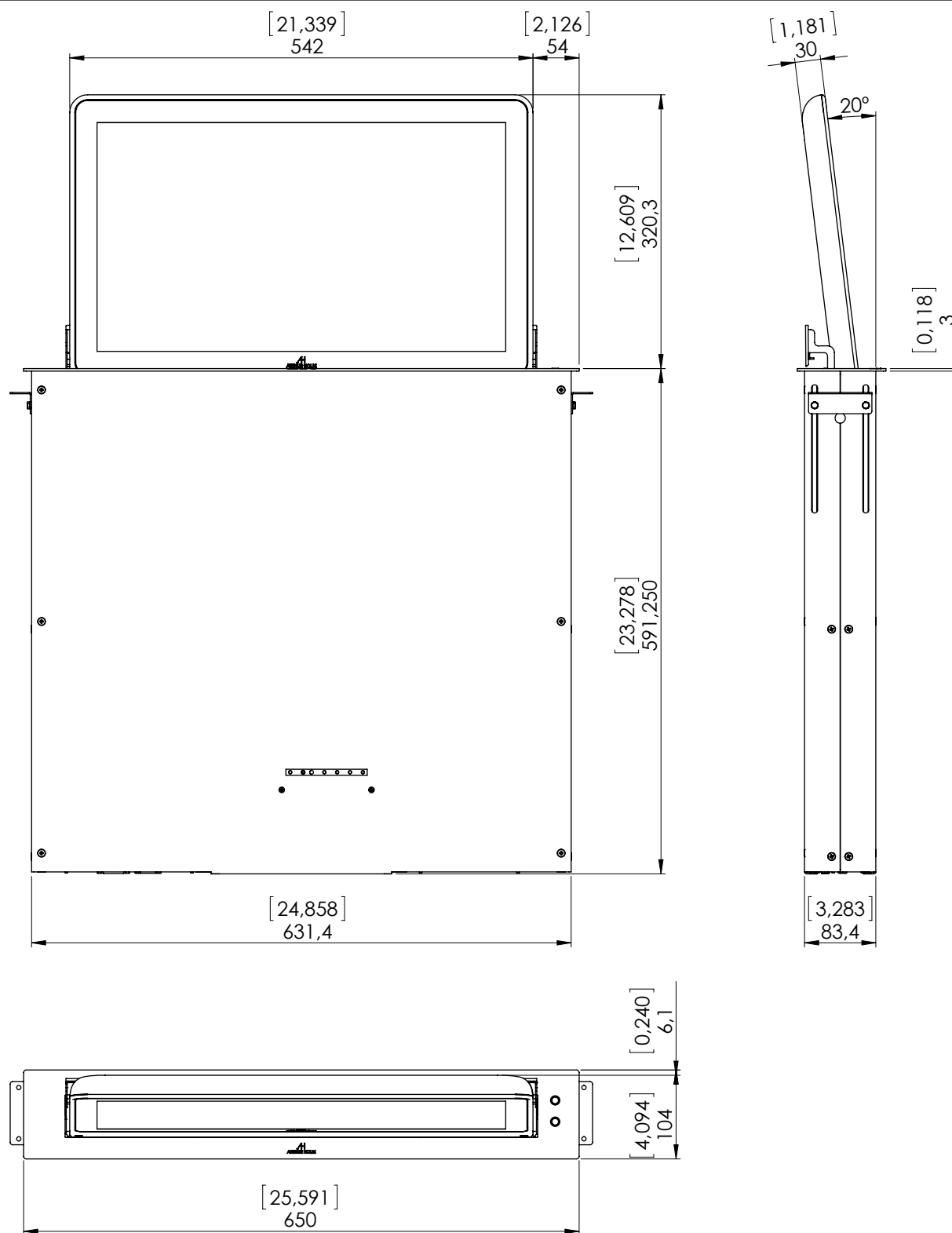
ACCESSORIES

ERT	Ethernet interface unit
AH mcs	Arthur Holm NET software



ARTHUR HOLM

Albiral Display Solutions SL
 Fàtima 25, Sant Hipòlit de Voltregà
 08512 Barcelona – Spain
 TEL: +34 93 850 23 76 / 23 83
 FAX: +34 93 850 25 50
 WEB: www.arthurholm.com
 E-MAIL: marketing@arthurholm.com

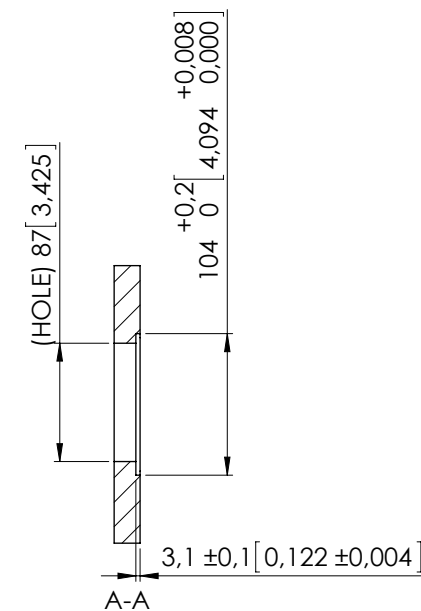


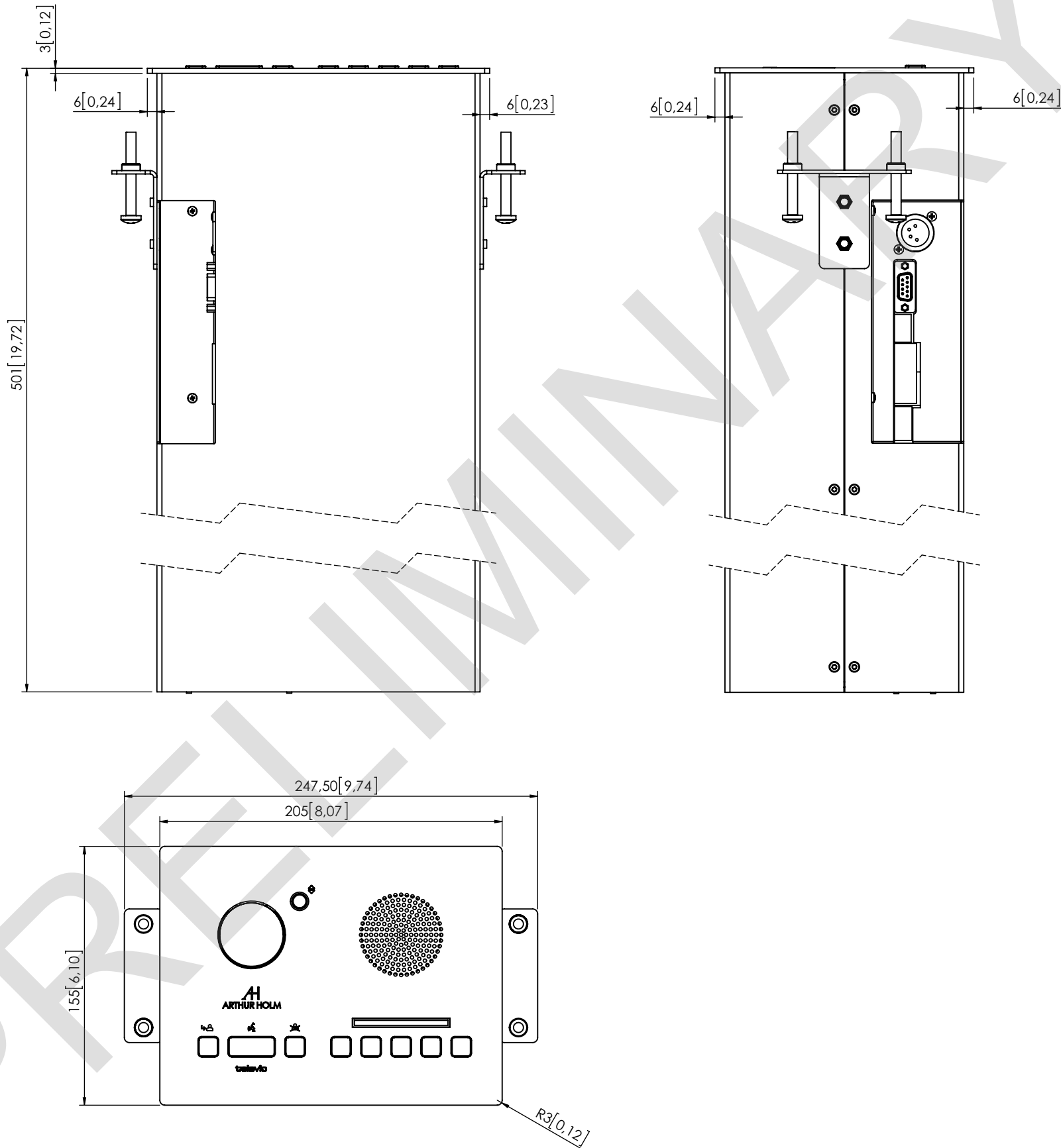
GENERAL DIMENSIONS

Scale 1:5
Dimensions in millimeters [Inches]
Revision: 0
Projection:

ARTHUR HOLM

Albiral Display Solutions SL
Fàtima 25, Sant Hipòlit de Voltregà. 08512 Barcelona (SPAIN)
TEL: +34 93 850 23 76 / 23 83 FAX: +34 93 850 25 50
WEB: www.arthurholm.com EMAIL: marketing@albiral.com





GENERAL DIMENSIONS

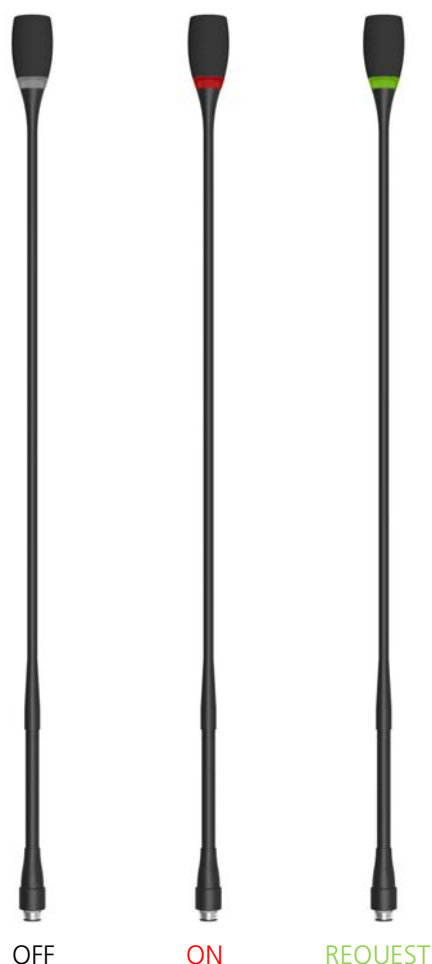
Scale 1:3
Dimensions in millimeters [Inches]
Revision: 0
Projection:

ARTHUR HOLM

Albiral Display Solutions SL
Fàtima 25, Sant Hipòlit de Voltregà. 08512 Barcelona (SPAIN)
TEL: +34 93 850 23 76 / 23 83 FAX: +34 93 850 25 50
WEB: www.arthurholm.com EMAIL: marketing@albiral.com



Directional Microphone, 50 cm



Description

The removable gooseneck microphone is equipped with a *screw lock connector* for easy connection to the different delegate and interpreter units.

Its unidirectional response results in *optimal performance* even in environments with a lot of ambient noise. The gooseneck design also allows for a large *freedom of movement*.

Another important advantage is the *very low susceptibility to interference from mobile phones*.

Finally, the D-MIC SL microphones deliver a *rich, natural sound*. It enables longer and more comfortable meetings where participants

experience less strain produced by traditional artificial and mechanical microphone sounds.

The light ring is **dark** (opaque) when the microphone is switched off, it lights up **red** when active, and **green** when in request.

The D-MICxxSL is available in a 30, 40, 50 and 70 cm version, as well as in a fully flexible 40 cm version.

Specifications

Mechanical	
Material	Brass
Color	Matt black, RAL 9011
Size (mm)	575 (w) × 25 (h) × 25 (d)
Size packed (mm)	610 (w) × 50 (h) × 45 (d)
Weight (g)	120
Weight packed (g)	200
Electrical	
Transducer principle	Back electret (condenser)
Operating principle	Pressure gradient
Polar pattern	Unidirectional, cardioid
Nominal conditions	Bias resistor = 1k2 Vdd = 3.3 V DC 1 Pa = 94 dB SPL
Max SPL @ 1 kHz	110 dB SPL (1% THD+N)
Signal to noise ratio	> 67 dB(A)
Free field sensitivity	(-40.5±2) dBV @ 1Pa, 1KHz
Power supply	3.3 V DC, 0.5 mA
Consumption	0.5 mA (without LED ring) Max 25 mA (with LED ring)
Connection	Screw lock

All information copyright **Televic Conference**, 2016. Version 1.1, April 2016

—
 Leo Bekaertlaan 1 · 8870 Izegem · Belgium
 Tel. +32 51 30 30 45
 Fax +32 51 31 06 70
 E-mail: conference@televic.com
 Web: <http://www.televic-conference.com>
Televic reserves the right to change this document without notice.

Ref. AHTL M

Universal microphone lift (maximum lenght of 500mm)

GENERAL SPECIFICATIONS

DynamicTalk is a universal motorised microphone lift system remotely controllable through RS 422 or GPI with a Dynamic LED Ring for “ready to talk” and “talk” indications

DynamicTalk is a universal XLR microphoneavailable lift, maximum microphone lenght of 500 mm. Also available in a customised version for all types of conference systems microphones.

Optional integration of the conference systems interface on the stainless steel cover plate. The cover plate can be covered with wood, leather or other types of table surface material to match the finishing of the furniture. The DynamicTalk is easy to install into new or existing furniture

ACCESSORIES

ERT	Ethernet interface unit
-----	-------------------------

CONTROL

UP/DOWN control	Button on upper cover plate GPI contact closer RS422 (RJ45 CAT 5)
------------------------	---

Microphone control	Button on upper cover plate
Customized function	Button on upper cover plate

GPI/O	LEDs control and switch
--------------	-------------------------

MECHANICAL

Dimensions	110 x 110 x 605 mm [4.33"x4.33"x23.82"]
-------------------	---

Weight	3.6 Kg
---------------	--------

ELECTRICAL

External power supply	100/240 Vac, 50/60Hz - 12Vdc
------------------------------	------------------------------

Power consumption	10 W
--------------------------	------



Arthur Holm is a registered brand by Albiral Display Solutions SL. Specifications subject to changes without previous notice. Rev 02 / 14



ARTHUR HOLM

Albiral Display Solutions SL

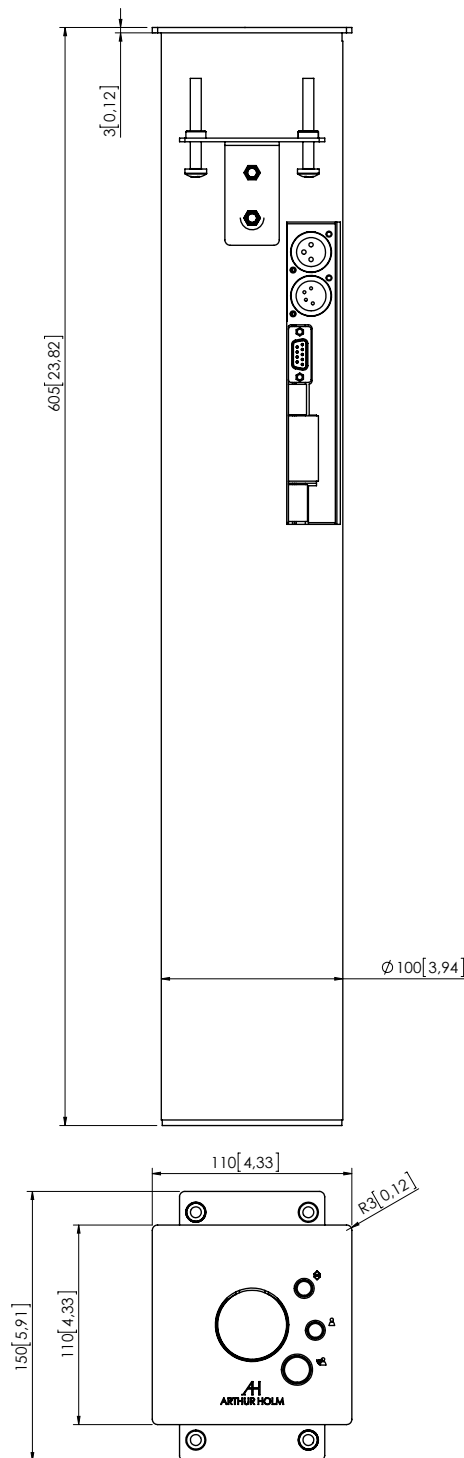
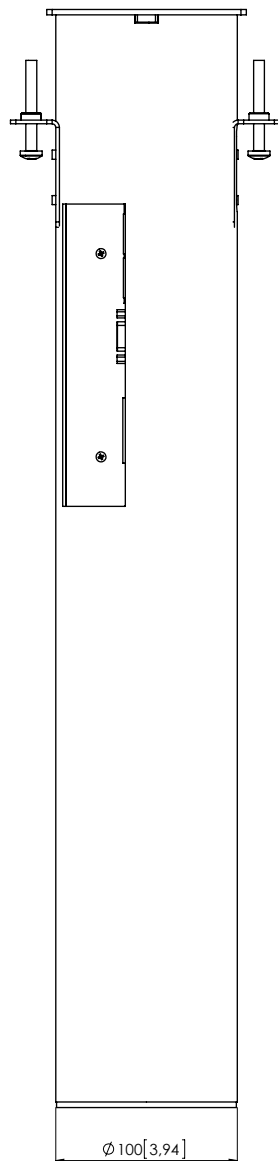
Fàtima 25, Sant Hipòlit de Voltregà
08512 Barcelona - Spain

TEL: +34 93 850 23 76 / 23 83

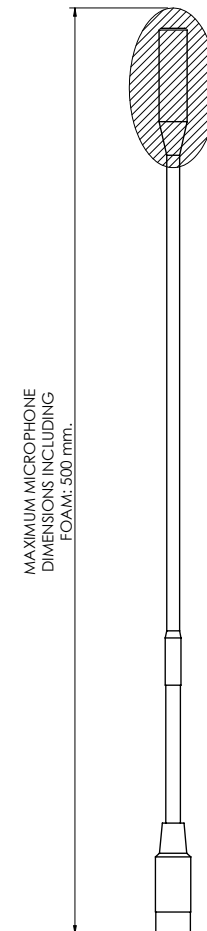
FAX: +34 93 850 25 50

WEB: www.arthurholm.com

E-MAIL: marketing@arthurholm.com



MAXIMUM MICROPHONE
DIMENSIONS INCLUDING
FOAM: 500 mm.



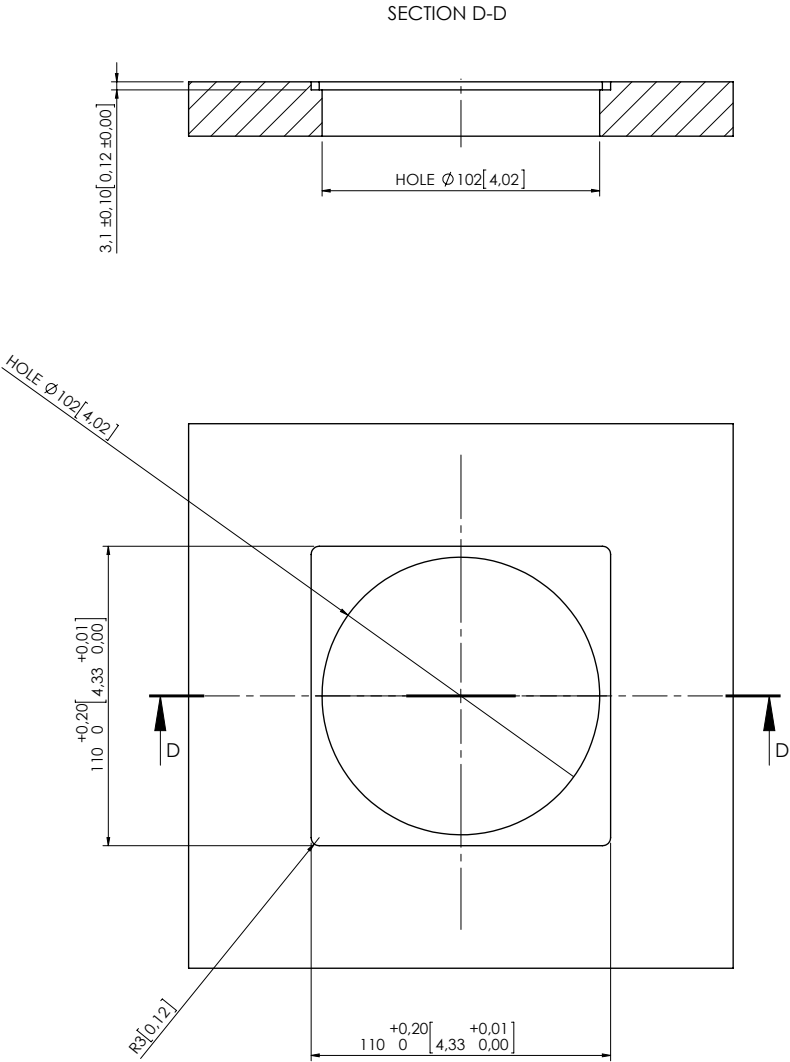
GENERAL DIMENSIONS

Scale 1:5
Dimensions in millimeters [inches]
Revision: 0
Projection:



ARTHUR HOLM

Albiral Display Solutions SL
Fàtima 25, Sant Hipòlit de Voltregà. 08512 Barcelona (SPAIN)
TEL: +34 93 850 23 76 / 23 83 FAX: +34 93 850 25 50
WEB: www.arthurholm.com EMAIL: marketing@albiral.com



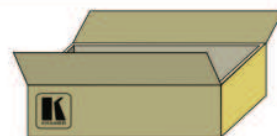


RTBUS-21 Quick Start Guide

This guide helps you install and use your product for the first time. For more detailed information, go to http://www.kramerelectronics.com/support/product_downloads.asp to download the latest manual or scan the QR code on the left.

Step 1: Check what's in the box

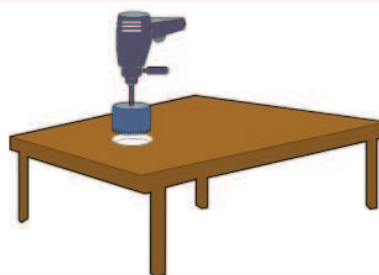
- ✓ RTBUS-21 Round Table Connection Bus
- ✓ 2 Mounting brackets
- ✓ 1 Quick Start guide



Save the original box and packaging materials in case you need to return your product for service.

Step 2: Cut an opening in the table

Drill an 110mm to 112mm (4.33in to 4.4in) hole in your table using a cup type drill bit.

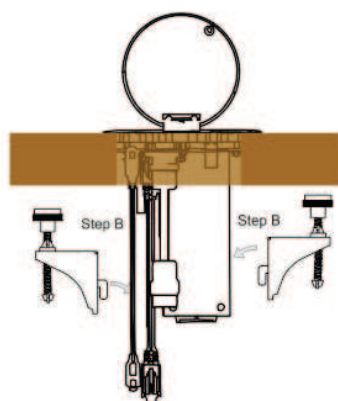


Step 3: Install the Connection BUS

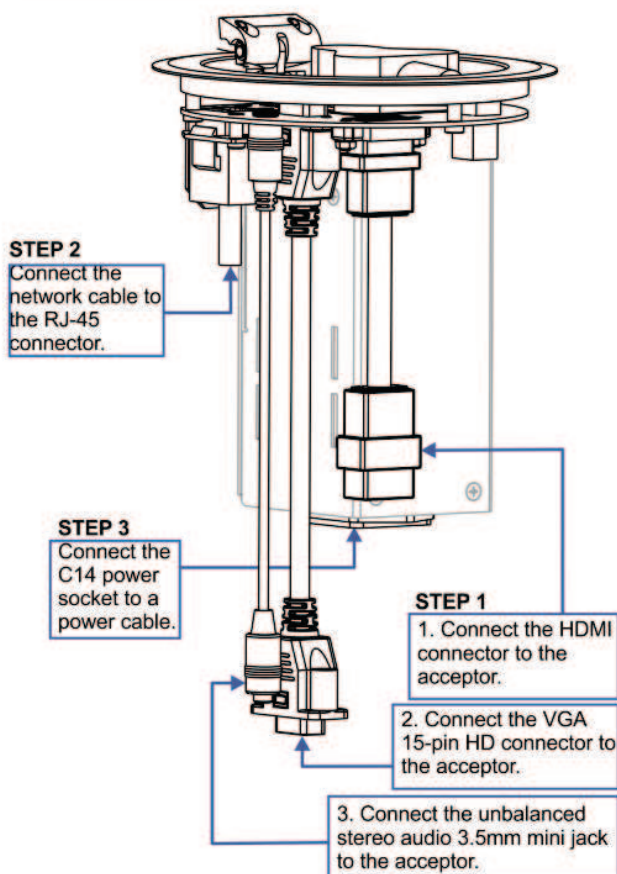
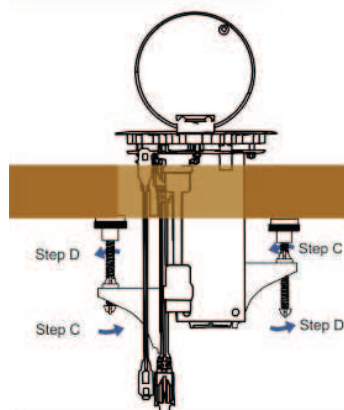
A: Insert the Unit through the table opening.

B: Insert the mounting brackets.

E: Connect the Cables.



C, D: Secure the unit.



4 Defining the RTBUS-21

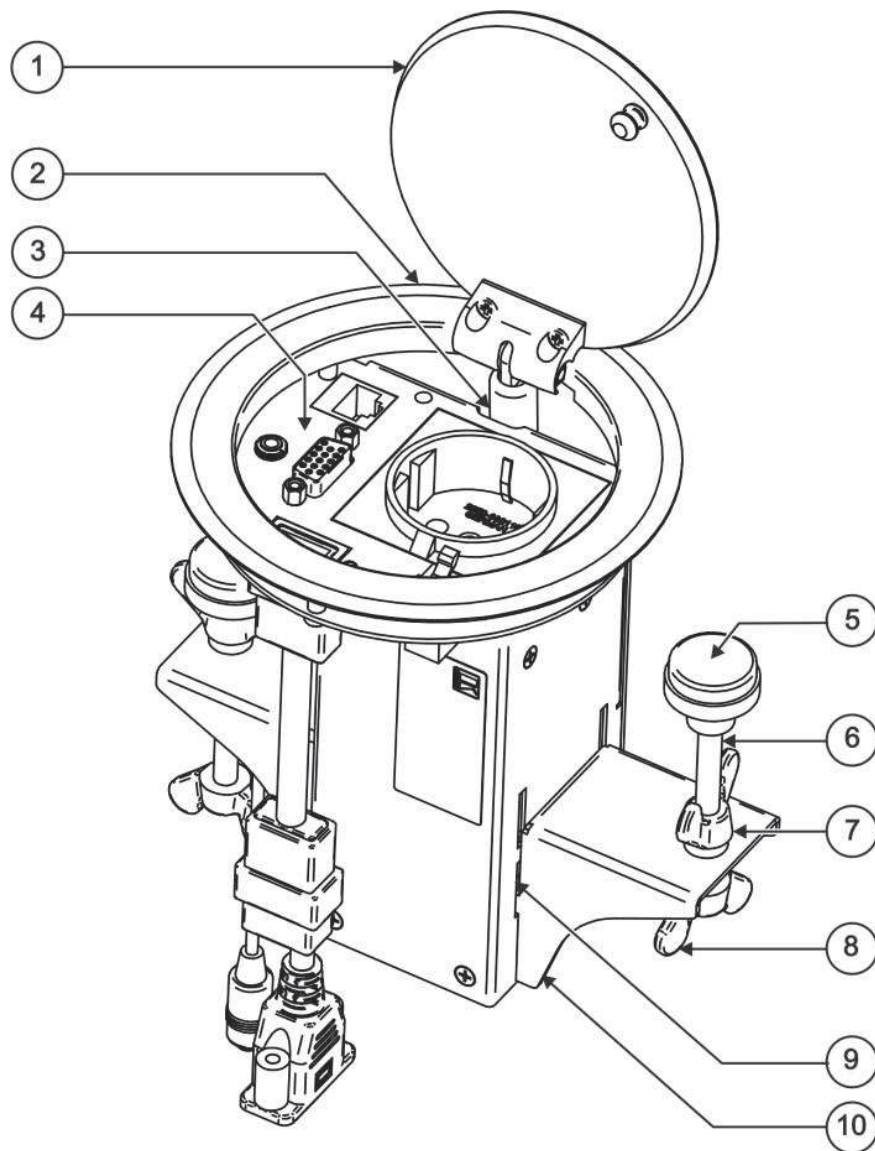


Figure 1: RTBUS-21 Top View

#	Feature	Function
1	Black anodized or brushed aluminum semi-automatic lid	Covers the connecting surface, leaving the table surface neat and tidy
2	Outer Rim	Fits over the table surface
3	Pneumatic Mechanism	Enables automatic lifting and smooth closing of the lid
4	Connecting Surface	See Figure 2
5	Rubber Protectors	Protect the table surface when mounting the unit (2)
6	Mounting Screws	For securing the RTBUS-21 to the table(2)
7	Locking Butterfly Nuts	Tighten to lock the mounting butterfly screw (2)
8	Mounting Butterfly Nuts	Tighten to secure the unit to the table surface (2)
9	Mounting Bracket Slits (two sets on each side)	Insert the mounting brackets to the slits when installing the RTBUS-21 (see Section 5.2).
10	Mounting Brackets (2 units)	Place in the bracket slits after inserting the enclosure into the table – for securing the unit to the table surface

4.1 The RTBUS-21 Connecting Surface

[Figure 2](#) defines the connecting surface:

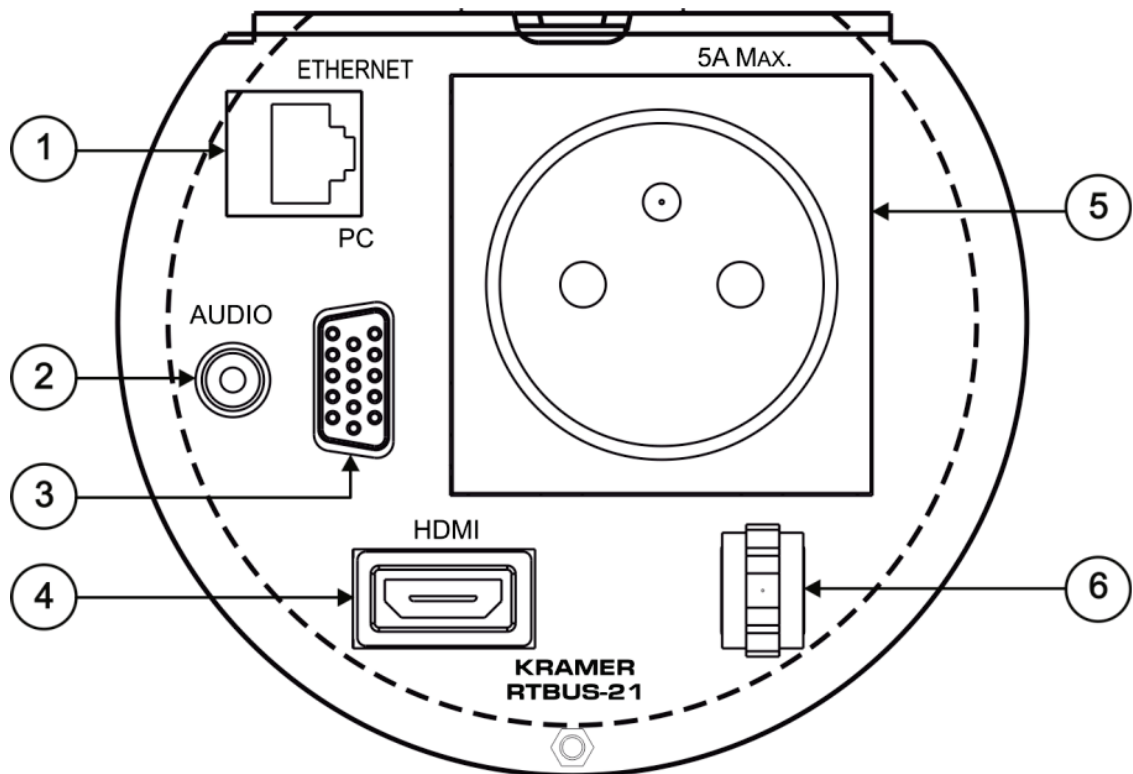


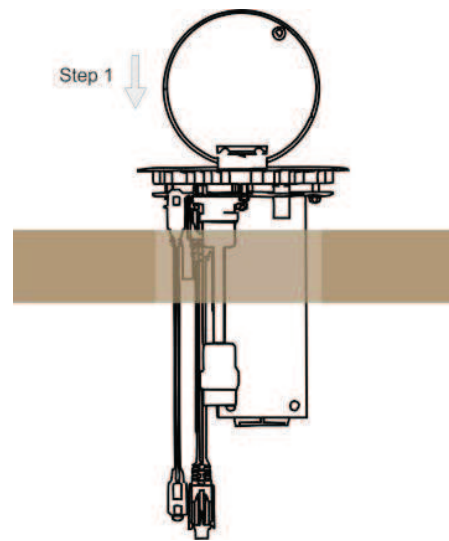
Figure 2: RTBUS-21 Connecting Surface

#	Feature	Function
1	ETHERNET RJ-45 Connector	Connect to a network
2	AUDIO 3.5mm Mini Jack	Connects to an unbalanced stereo audio source
3	PC 15-pin HD Connector	Connects to a VGA source
4	HDMI Connector	Connect to HDMI source
5	5A MAX. Power Socket	Connects to 90-240V AC power consuming device
6	Lid Latch	For safely closing the lid

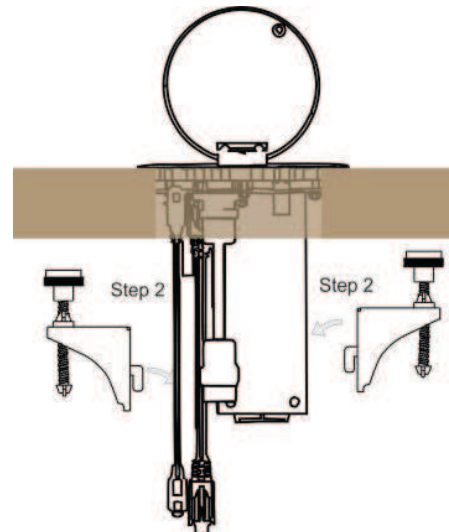
5.2 Mounting the RTBUS-21 in the Table

To mount the unit, follow these steps:

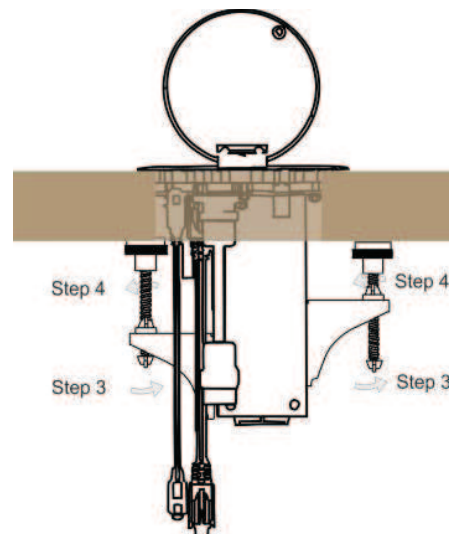
Step 1: Insert the **RTBUS-21** into the hole cut into the table making sure the outer rim is firm against the surface of the table.



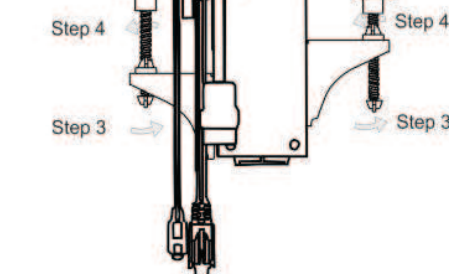
Step 2: From underneath the table, slide the mounting brackets into the appropriate slots.



Step 3: Tighten the butterfly mounting screws securely upward against the table.



Step 4: Lock the mounting screws into position with the locking butterfly screws.



5.3 Connecting the Cables and Wires

[Figure 3](#) illustrates how to connect the cables to the underside of the unit:

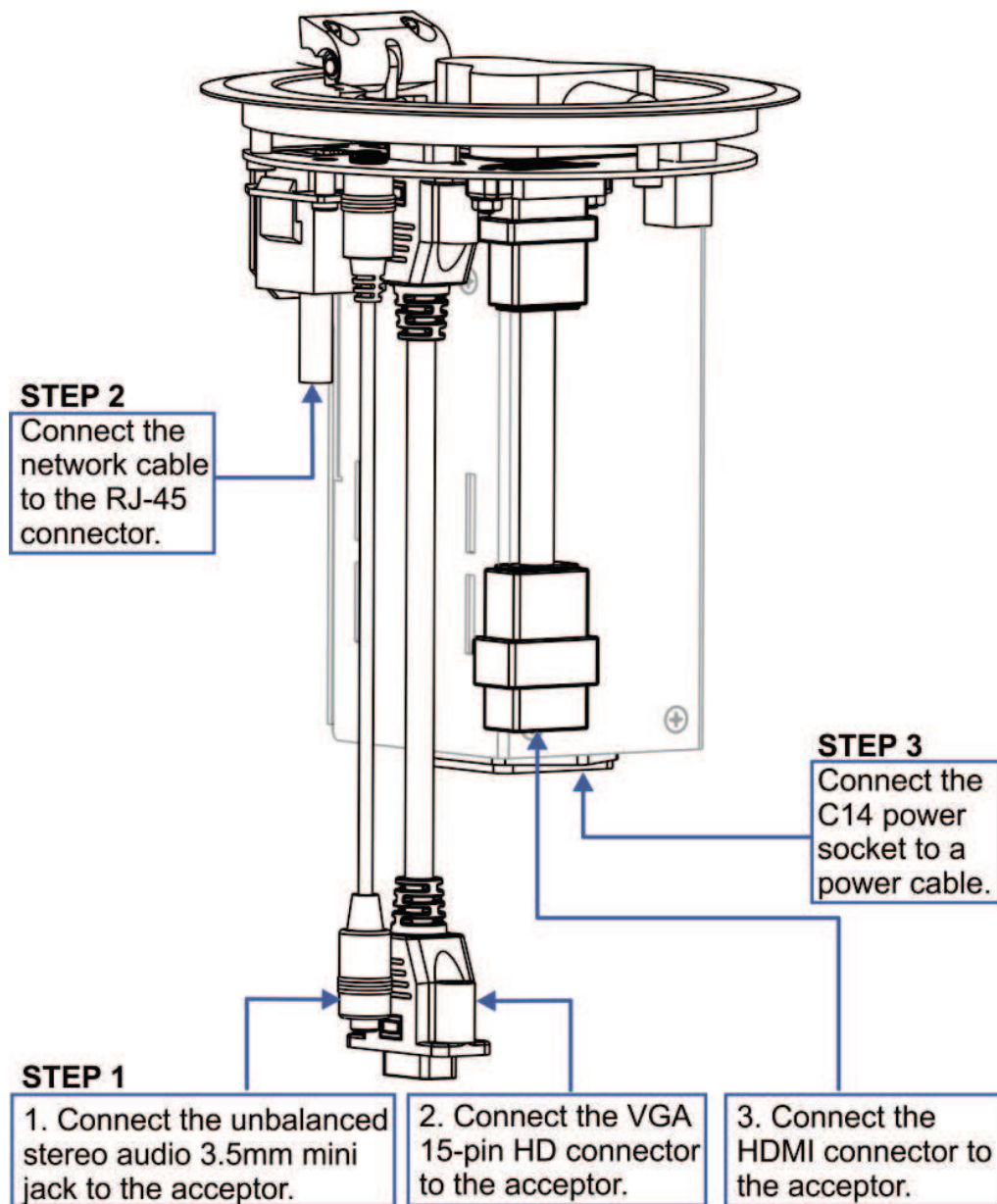


Figure 3: Connecting the Cables



Note that the cables shown in [Figure 3](#) are 50cm long and have a MALE connector at the free end so they can be plugged directly into the acceptors. You can extend these cables if required.
Note that the connecting surface is an integral part of the **RTBUS-21** enclosure and cannot be detached.

We recommend that you use the Kramer **C-AC** AC Power Cord series to power the unit.

6 Using the RTBUS-21

Once the **RTBUS-21** is installed, you can easily customize it to your own needs by directly plugging in the required AV equipment, as illustrated in the example in [Figure 4](#).

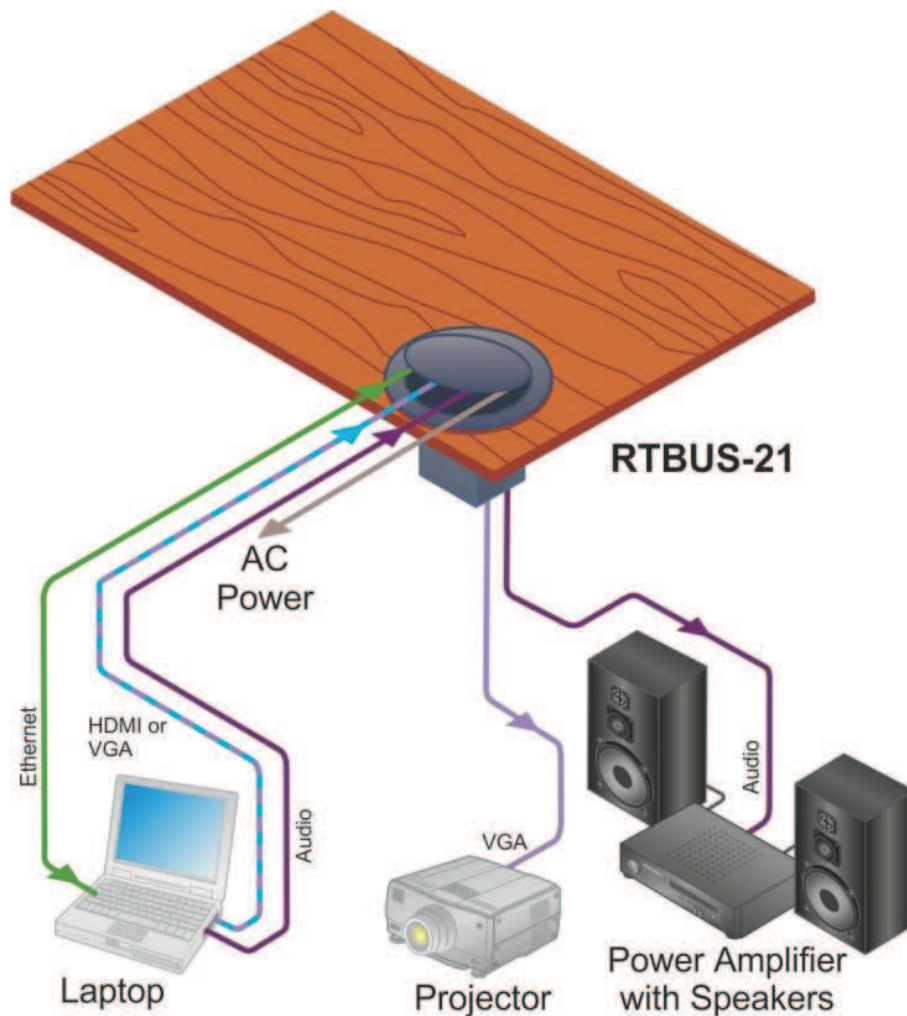


Figure 4: RTBUS-21 Boardroom Installation